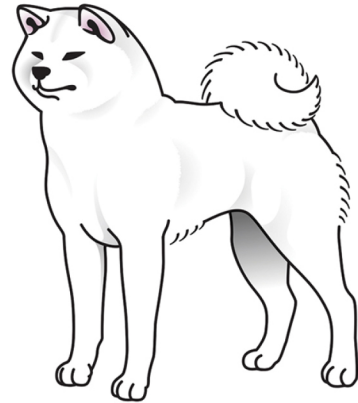


COLOUR

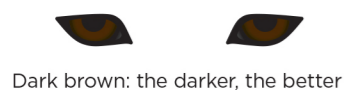
VISUAL QUICK GUIDE FOR FCI



Colour: Red fawn, sesame (red fawn hairs with black tips), brindle and white. All the above mentioned colours except white must have « urajiro ». (Urajiro = whitish coat on the sides of the muzzle, on the cheeks, on the underside of jaw, neck, chest, body and tail and on the inside of the legs).

ALL COLORS

EYES



Dark brown: the darker, the better



FAULT: iris light in colour

NOSE



Black



Slight and diffuse lack of pigment accepted in white dogs only, but black is always preferred



DQ: black mask, markings on white ground

RED FAWN



← preferred range → excessive white hachiware **DQ:** black mask



OMOTEJIRO & URAJIRO



black saddle



DQ: markings on white ground



front



← partial collar →



full collar



hachiware connected to full collar



excessive ticking on legs or muzzle



preferred



← excessive white on legs & chest →



pale

WHITE



pale red, not white



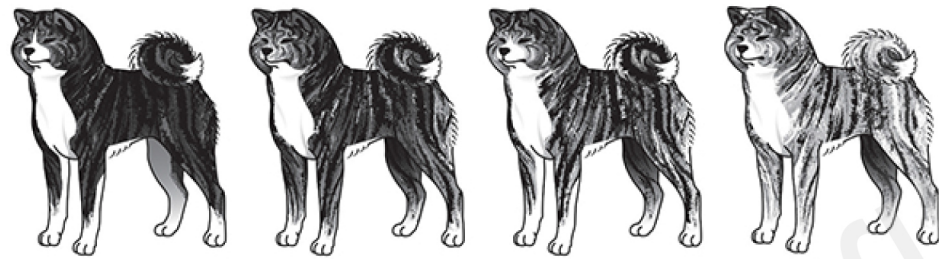
biscuit color

SESAME

The inclusion of sesame in the FCI standard may seem misleading since true sesame Akitainu has not been produced in decades. Perhaps it is out of respect to the country of origin whose first Akitainu breed club also lists goma as an acceptable color in its standard for nostalgic reasons.



BRINDLE



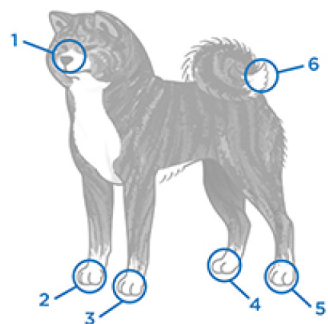
← **KUROTORA (black brindle)** → **SHIMOFURI**



← **AKATORA (red brindle)** → **SHIMOFURI**



self mask ← *blaze* → *hachiware* **DQ: black mask**



ROPPAKU
(ideal 6 points of white)



URAJIRO
(white underside coat)



DQ: markings on white ground



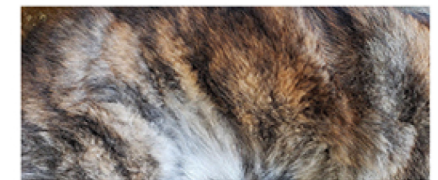
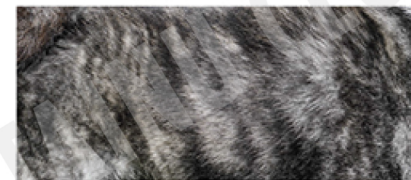
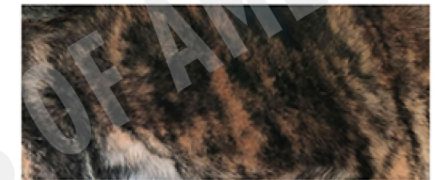
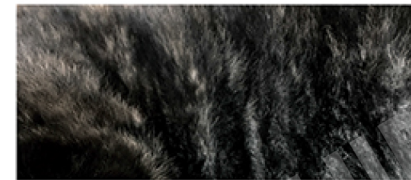
front ← *partial collar* → *full collar*



hachiware connected to full collar



excessive ticking on legs or muzzle



Color Samples